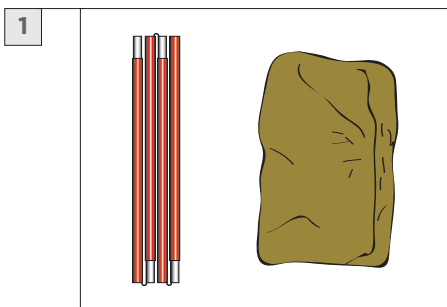


SOLO EXPEDITION TENT - SET UP INSTRUCTIONS

Your Solo Expedition Tent is easy to pitch and maintain. Follow these instructions to set up your tent quickly, safely and easily. In order to familiarize yourself with your new tent, we suggest that you test pitch it before setting off on an expedition.

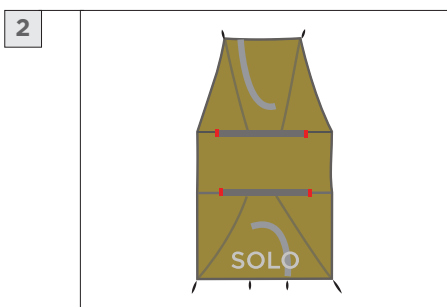
- Find a site that is even, protected from the wind and without any sharp objects.
- Remove any sharp rocks or sticks that can damage your tent floor.
- Avoid hollow spots where rain water can gather.
- Use a footprint, sold separately, to protect your inner tent from ground moisture, dirt and sharp objects.



UNPACK TENT

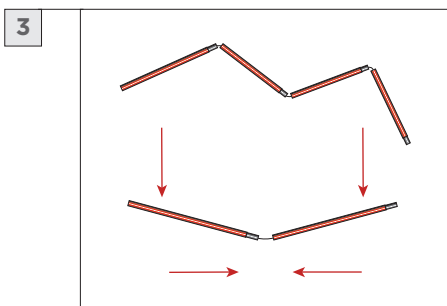
CONTENTS:

- Inner Tent & Outer Tent (arrive already clipped together)
- Pole Bag (2 Tent Poles)
- Stake Bag



UNROLL TENT

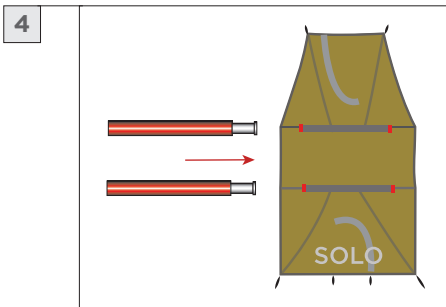
Stake end marked 'SOLO', one stake in each of the 4 black webbing straps.



REMOVE THE 2 POLES FROM THE POLE BAG

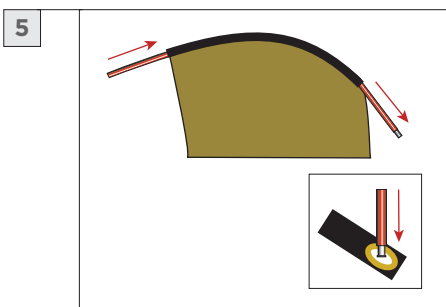
Assemble the Poles. Carefully unfold the shock corded sections and allow them to slide together. Do not snap the pole sections together, this will damage the poles. Make certain that the insert of each pole section is fully inserted into the next section. Failure to do so may cause your poles to crack.

REDVERZ



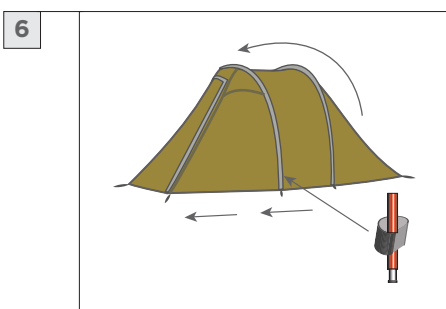
MATCH POLES

Pole colors correspond to the appropriate colored pole loop. Red poles slide into sleeves with red tabs. The Solo Expedition Tent poles are identical and interchangeable.



INSERT POLES

Gently slide each pole through the sleeve, and insert the pole tip into the grommet. Slide the sleeve material over the bending pole and place the other tip into the opposite grommet. Repeat for the other poles. The tent is now pegged at one end and lying down with poles fully inserted.



ERECT THE TENT

Pull the 2 black loops on the garage or opposite end of tent. The tent is now standing. Peg this end down with one stake in each of the 2 black loops. Clip tent to poles.

The tent comes with guy lines for use in windy conditions. It is imperative to peg down the lines as far as possible from the tent for best results in strong wind. They should, however, not be pulled so tight that they distort the natural shape of the tent.

TAKE DOWN AND PACKING. Start by sweeping out all dirt from the inner tent. Close all zippers. Pull up all ground stakes except the stakes at the sleeping end. **PUSH OUT THE POLES!** Never pull the poles out because the sections will separate from one other not only making it difficult to get them out, but also causing undue stress and damage! When the poles have been taken out pull up the remaining pegs, fold and roll up the tent. Make sure that while rolling the tent, air is gently escaping from it.

DRYING AND CARING FOR YOUR TENT. It is important that you do not store a tent without completely drying it first, except for short periods of time such as during a trip. After use it should be hung in a dry and well-vented spot. Failure to properly dry all tent components before storing your tent can lead to molding. If the tent needs cleaning use luke warm water only. Stains should be cleaned with luke warm water as well. Using cleaning products of any kind will damage the waterproofing on your tent. Avoid pitching your tent for long periods in direct sunlight since UV-light damages all fabrics. Clean and/or replace lost ground stakes.

ALWAYS LEAN MOTORCYCLE AWAY FROM FROM SLEEPING COMPARTMENT